

TE-7-MD-CK - 3/4 HP

APPLICATIONS

Circulation of highly corrosive acids, alkalis, solvents, brine, plating solutions, sterile solutions, and other highly corrosive chemicals and solutions that are compatible with the pump's material of construction

FEATURES

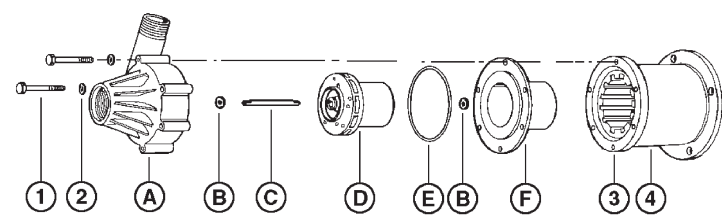
- Non-submersible for in-line use only
- Thermally protected, totally enclosed, fan cooled, capacitor start motor
- Ball bearings
- Conduit box (must be field wired – cord not included)
- Specific gravity to 1.1
- Fluid temperature to 200 °F
- Ambient air temperature to 77 °F

NOTE: Consult your local distributor or the factory for applications with higher ambient temperatures, specific gravities and viscosities.



SERIES SPECIFICATIONS

Item No.	Model	Discharge	Intake	HP	Volts	Hz	Amps	Watts	Gallons per minute (Liter per minute) @ Height					Shut-Off	PSI	Cord	Weight lbs (Kg)
									1'	10'	20'	40'	50'				
587600	TE-7-MD-CK	1" MNPT	1-1/2" FNPT	3/4	115	50/60	10.4/11.8	1080/1230	53 (200.6)	46.7 (176.8)	40 (151.4)	30.8 (116.6)	21.6 (81.8)	58.9' (17.95 m)	25.5	N/A	40 (18.1 Kg)
587603 3 Phase	TE-7-MD-CK	1" MNPT	1-1/2" FNPT	3/4	230	50/60	2.4/2.9	1080/1230	53 (200.6)	46.7 (176.8)	40 (151.4)	30.8 (116.6)	21.6 (81.8)	58.9' (17.95 m)	25.5	N/A	33 (15 Kg)
587106	7-MD-CK	1" MNPT	1-1/2" FNPT	Pump Head Less Motor													8 (3.6 Kg)



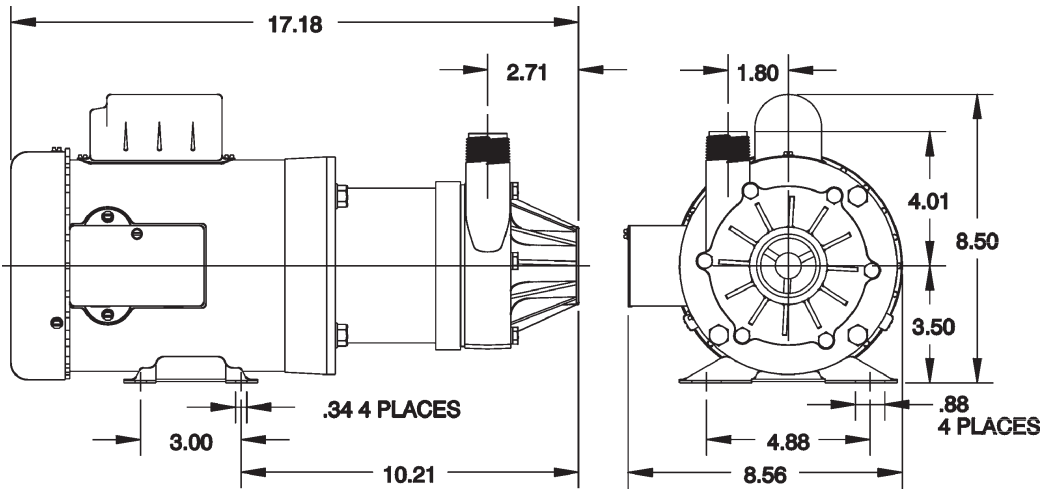
REPLACEMENT PARTS

Item	Part No.	Description
A	187015	Volute
B	187085	Thrust washer, ceramic
C	187056	Shaft, ceramic
D	187174	Impeller/Bushing
E	924016	O-ring, GF-PPS
F	187024	Backplate
1	903712	Bolt
2	921050	Washer
3	187121	Drive magnet
4	187073	Magnet housing

NOTE: Parts A-F contact fluid

TE-7-MD-CK - 3/4 HP

ENGINEERING DATA



NOTE: Designs and dimensions may vary for various reasons (i.e. type of motor). This information should be used as general guide rather than an unqualified guarantee. Specifications are subject to change without prior notice.

PERFORMANCE DATA

